

CS9100 Installation in Subaru Cars*

⚠️ Disconnect the negative terminal of the accumulator before installing the CS9100 to avoid errors in the ECU. In order to install CS9100, remove the original navigation system.

1. Unplug the connectors of the original navigation system (most often located under front passenger seat) and remove it.
2. Connect one end of the Subaru interface cable (**Fig. 1**) to **CS9100** (the 8-pin connector to the **DATA** socket, and the 9-pin connector to the **RGB** socket). Connect the other end of the Subaru interface cable (with a 13-pin socket) to the 13-pin connector of the original navigation system.



Figure 1

3. Connect the **CS9100** power supply cable to the **CN100** connector's wiring** of the original navigation system. (**Fig. 2**)

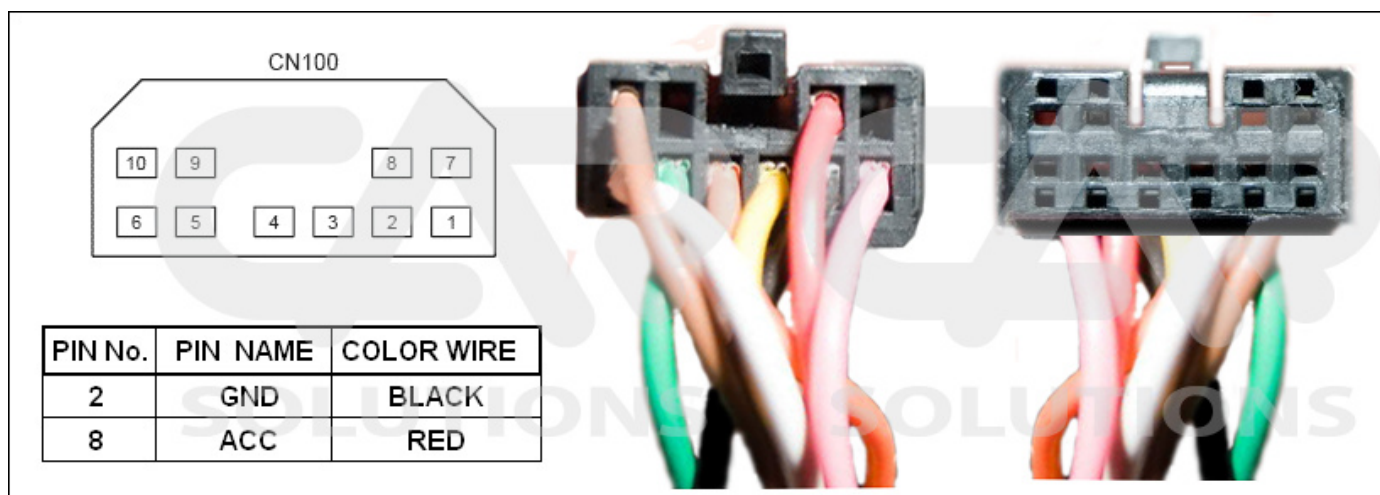


Figure 2

How to install the GPS antenna

Removal of the original navigation system allows you to connect **CS9100** to the car's original GPS antenna. The best way to do this is to desolder the plastic socket (**Fig. 3**) from the original wiring and solder a 10cm coaxial cable fitted with a SMA Male connector (**Fig. 4**) with the wiring. The **CS9100** navigation system is fully compatible with the original antenna in all specifications.

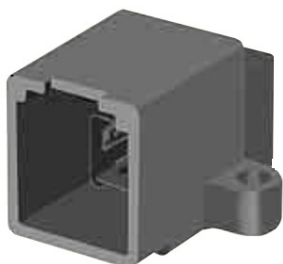


Figure 3



Figure 4

On the other hand, you can use **CS9100** with the GPS antenna that comes with it. For better signal pickup, install the new GPS antenna in the rear spoiler (**Fig. 5**) (cable length allows for such installation). If there is no rear spoiler, a fin-shaped antenna (**Fig.6**) can be used (it is not included with **CS9100**). You can also install the **CS9100** antenna (**Fig. 7**) under the windshield, over or under the plastic panel (**Fig. 5**).

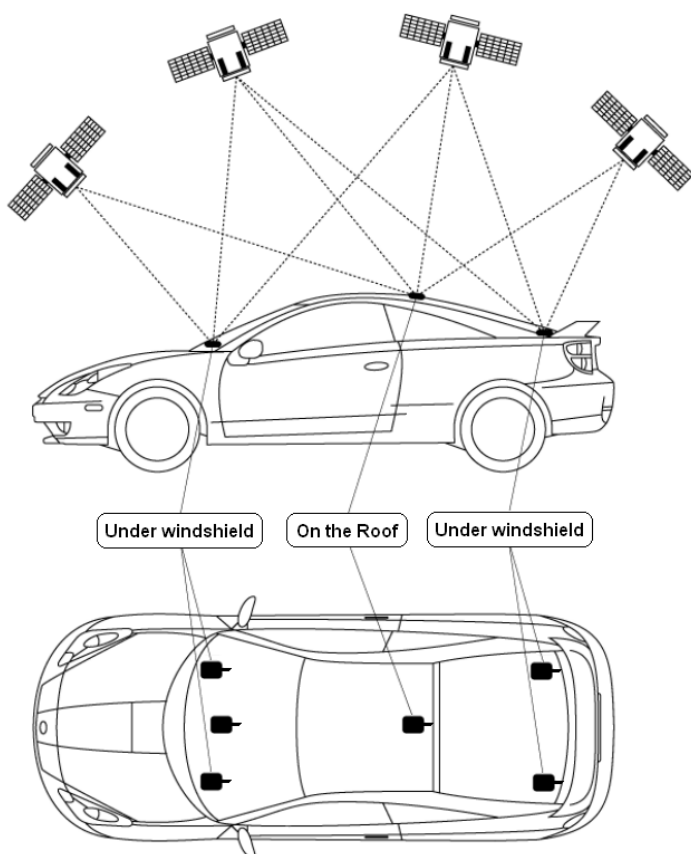


Figure 5

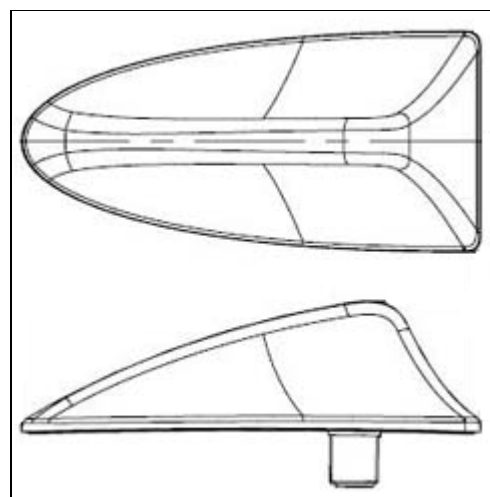





Figure 6



Figure 7

-  **When installing the GPS antenna in a concealed position, make sure there is no metal above it.**
-  **Installed the GPS antenna with the magnetic base down. (Fig. 7).**
-  **If your windshield and windows are made of thermal glass, install the GPS antenna on the roof or rear spoiler.**

When you switch on the **CS9100** navigator for the first time, handle all setup procedures using the remote control or a USB mouse.

If **CS9100** doesn't respond to the remote control, you'll need to synchronize them. Press **Return** and **Home** simultaneously and hold for 1s. Synchronous flashing of LEDs indicates a successful synchronization. For correct operation of the navigation system, activate an appropriate control protocol:

1. Use the remote control to enter **Settings** in the main menu.
2. Choose **System Config** (Fig. 8).
3. Go to the **Panel I** tab.
4. Choose the **Kenwood** protocol (Fig. 9).
5. Press **SAVE**.



Figure 8

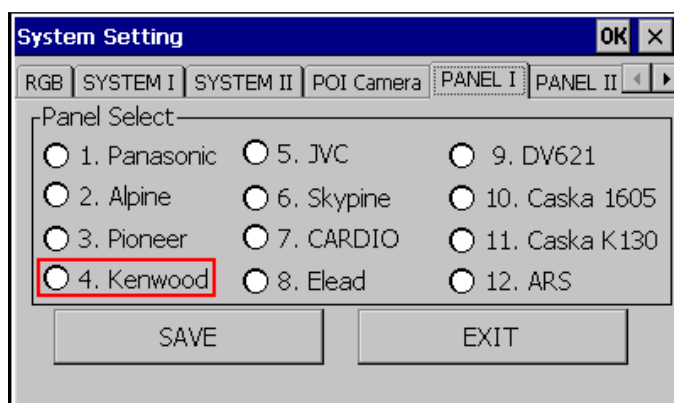


Figure 9

To be able to control the navigation system using the original touch panel without the remote control, you'll need to calibrate it:

1. Use the remote control to enter **Settings** in the main menu.
2. Choose **Calibration**.
3. Use a stylus from a PDA or any other non-sharp object to click on the marks that appear on the screen. (Fig. 10)
4. Press **EXIT**.

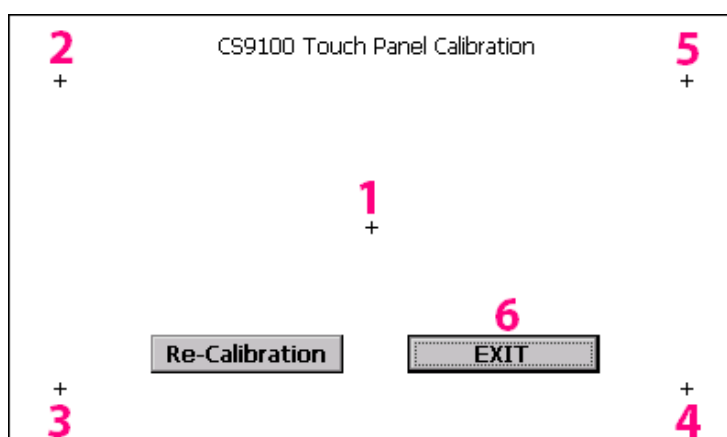


Figure 10

Once you finish all setup procedures you can activate **Autorun** of the navigational software (or any other software) in the **Settings** menu (Fig. 8).



***This type of connection works only for cars with an external DVD navigation system.**



**** You don't have to cut off the wire connectors of the original navigation system. It is sufficient to cut into the original wires.**