

Connecting the Modem to CS9100

Power off and connect the modem directly to **USB Host** or via USB Power Booster. With additional power supply support, you can also use USB HUB v1.1* (*the modem does not work correctly with USB HUB v. 2.0 because of S3C2440 processor limitations*). Most modems and some USB devices (e.g. USB HDD) consume over 500 mA (*USB Host 5V, 500mA*) and need external power source to maintain stable operation.

Power on **CS9100**, if a dialog window appears (a new device driver request), select the path to the file: [\Windows\232usb.dll](#) (*the path can be typed with on-screen keyboard or normal keyboard connected to USB Host*). The driver request will not appear if this hardware is supported at the firmware level.

Connection settings

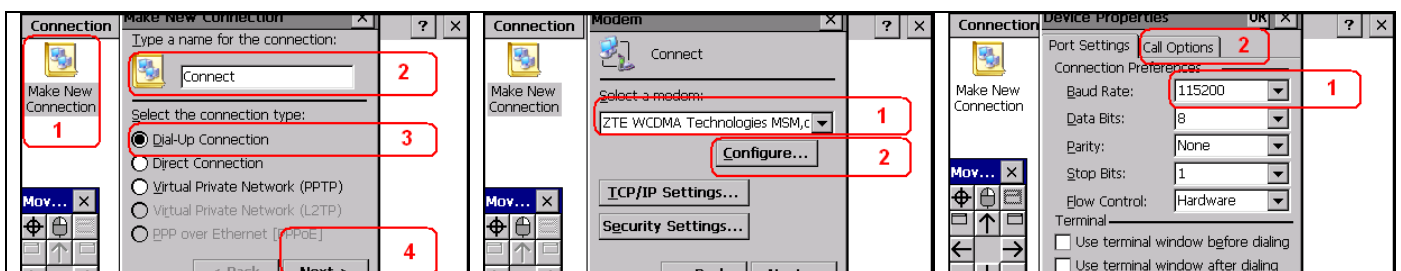
The example below describes how to connect to the Internet through Ukrainian provider [UTEL](#). The dial-up number and additional dial commands can be obtained from your service provider web site.


Before connecting a modem to CS9100 you need to do the following:

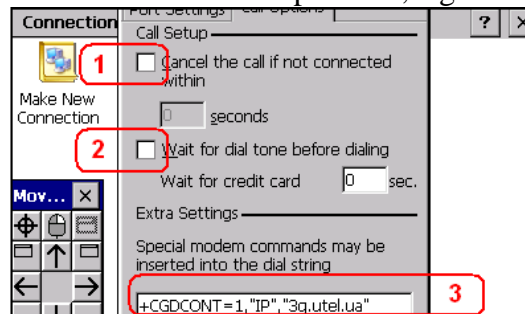
1. Activate the new SIM card: call any phone number (*except service numbers*), listen to operator's greeting message and talk for a few seconds.
2. Switch off PIN code request.

These operations can be performed with a mobile phone that supports your service provider network (e.g.: *CDMA, WCDMA, GSM, etc.*)

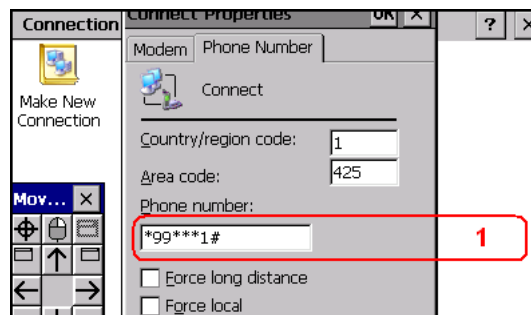
1. Run **MoveWindow** application from Total Commander or Win. Explorer (*application path: \SDMMC Disk\Menu\Software\System\ MoveWindow.exe*). This application moves unmovable windows.
2. In the «**Settings**» window, select «**Connection**» and click the icon «**Make New Connection**».
3. When a dialog window appears, make a new connection «**Connect**» (*if a connection «Connect» already exists, delete it first*):



- The «**Device Properties**» window can't be moved around, which makes it hard to enter additional modem commands in the «**Call Options**» tab. Use the «**MoveWindow**» utility to move this window around. Select  in the dialog window of the «**MoveWindow**» utility, hover a cursor over the window title and click it.
- Use arrow buttons in the utility toolbar to move the window upward. Type the required command without gaps in the additional modem command input field, e.g. `+CGDCONT=1,"IP","3g.utel.ua"`.



- After the additional commands are inserted, move the window down and click «**OK**». After the window for dial-up number input appears, type in the dial-up number, e.g.: `*99***1#`



- Once you have inserted the dial-up number, close the connection window. Select the connection (in this case called «**Connect**»), enter username/password (if it is required by the service provider during the connection setting) and click «**Connect**». If everything is done correctly, the connection will be finished on the first try and you will be informed with a sound similar to sonar; if not, perform the procedure over again.
- Connect to the network by clicking the «**Connection**» icon in the «**Internet**» window. This icon is connected to the script that makes a connection called «**Connect**», runs connection automatically and minimizes it to the tray. If you click the «**Connection**» icon, a dialog connection window appears. In this window you can choose 2 functions – Disconnect or Minimize to tray – «**Hide**».