

Installation Guide

For RNS510



- **High quality**
- **Higher reliability, stability**
- **Simple assembly**
- **Custom design service**

1. Disassembling Head Unit



Disassemble Head Unit (HU) like at the picture. Disconnect OEM Flat Cable (FPC) from main board & LSD board.

() .

2. Connecting FPC Cable



Connect new FPC cable (marked FROM SYSTEM BD) to the indicated connector main board of HU

(FROM SYSTEM BD)



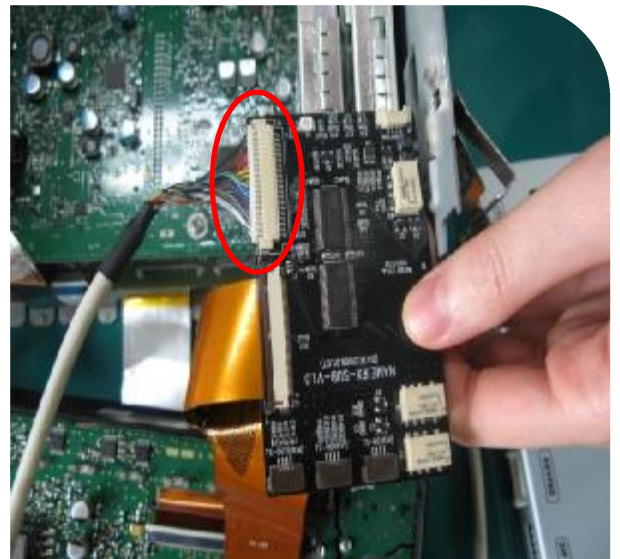
Connect the other side of FPC cable (marked TO LCD) to the connector of LCD board

(TO LCD)

3. Connecting Sub-board



Connect FPC cable to sub-board



Connect "LCD" cable from sub-board to interface



Completed