

# Installation Manual

## (QPI-LVTX-PCM3.1 PDC)

---

# Warning / Caution



## Warning

- When installing the main unit, do not remove or alter existing vehicle fasteners, including nuts, bolts, screw, clips, and fittings. Never detach, move or alter existing vehicle wiring, including electrical grounds and straps. Alteration of existing vehicle components may make vehicle unsafe to operate. Should be no any electronic devices or magnetic pole around installation place.
- Air bags are vital part of a safety system. Never install main unit in a way which will alter air bag wiring or interfere with air bag deployment. Air bags must function properly in the event of an accident.
- Before installing, check the location of pipe, tank, electrical cables and others.
- Read and follow the instruction manual.
- Wiring location must not interfere driving, get in or out from car.
- Use electrical tape to insulate the ends of all wires, even if they are not used. Proper insulation prevents arcs, shocks and fires.
- When installation is complete, test all vehicle electrical systems to ensure they operate correctly, including lights, horn, brake lights, and emergency flashers.
- According to our sales policy, any problems caused by user's mistake, careless can not be guaranteed.



## Caution

- All steps of installation should be done by well-trained specialist.
- During installation ignition key should be taken off and after all installation finish connect power cable with interface for the last step.
- Do not install the main unit in places where it may be exposed to dew condensation (around the air conditioning hose, etc), or in locations where it may come in contact with water, high levels of moisture, dust or oily smoke
- Install wiring in a manner in which cables will not come in contact with metal parts. The wiring may be damaged by contact with metal parts, resulting in fire and shocks. Avoid all contact with hot surfaces when wiring the main unit. High temperatures may damage wiring, causing shorts, arcing and fires.
- Kindly check all parts are in the box, when receiving the product, if anything missing, inform to the supplier or manufacturer.

# Table of Contents

---

1. Specifications	
1.1 Main Specifications	4
1.2 Features	5
1.3 System Diagram	6
1.4 Components	7
2. Installation	
2.1 Installation Diagram	8
2.2 Installation	9
2.3 CAN connection	14
3. Settings	
3.1 DIP switch	15
3.2 Remote	16
3.3 Car model and Navi Model	17
3.4 Factory Mode	18
3.5 DVD, DTV IR MEMORY input	21
3.6 Use of OEM button	23
3.7 Rear Camera	24
3.8 Rear Parking Guidelines	25
3.9 OSD	26
4. Trouble Shooting	28

# 1. Specifications

---

## 1.1 Main Specifications

1. Car Compatibility  
Porsche PCM3.1 head unit
2. Components  
Interface\* 1EA  
Sub-board\*1EA
3. MULTIMEDIA INTERFACE Input specifications
  - 3 \* A/V Input (Video External Input).
  - 1 \* CVBS(Rear Camera) Input
  - 1 \* Analog RGB input (Navigation)
  - 1 \* LCD input (Car system input)
4. MULTIMEDIA INTERFACE Output specifications
  - 1 \* LCD output
5. Power specification  
Input power : 8VDC ~ 18VDC  
Consumed power : 3.5WATT
6. Switch input mode
  - External display skip function :  
Through DIP switch, can controls each video input
  - Through remote control, can changes input mode
  - Through CAN or rear lamp cable, rear camera can be detected

# 1. Specifications

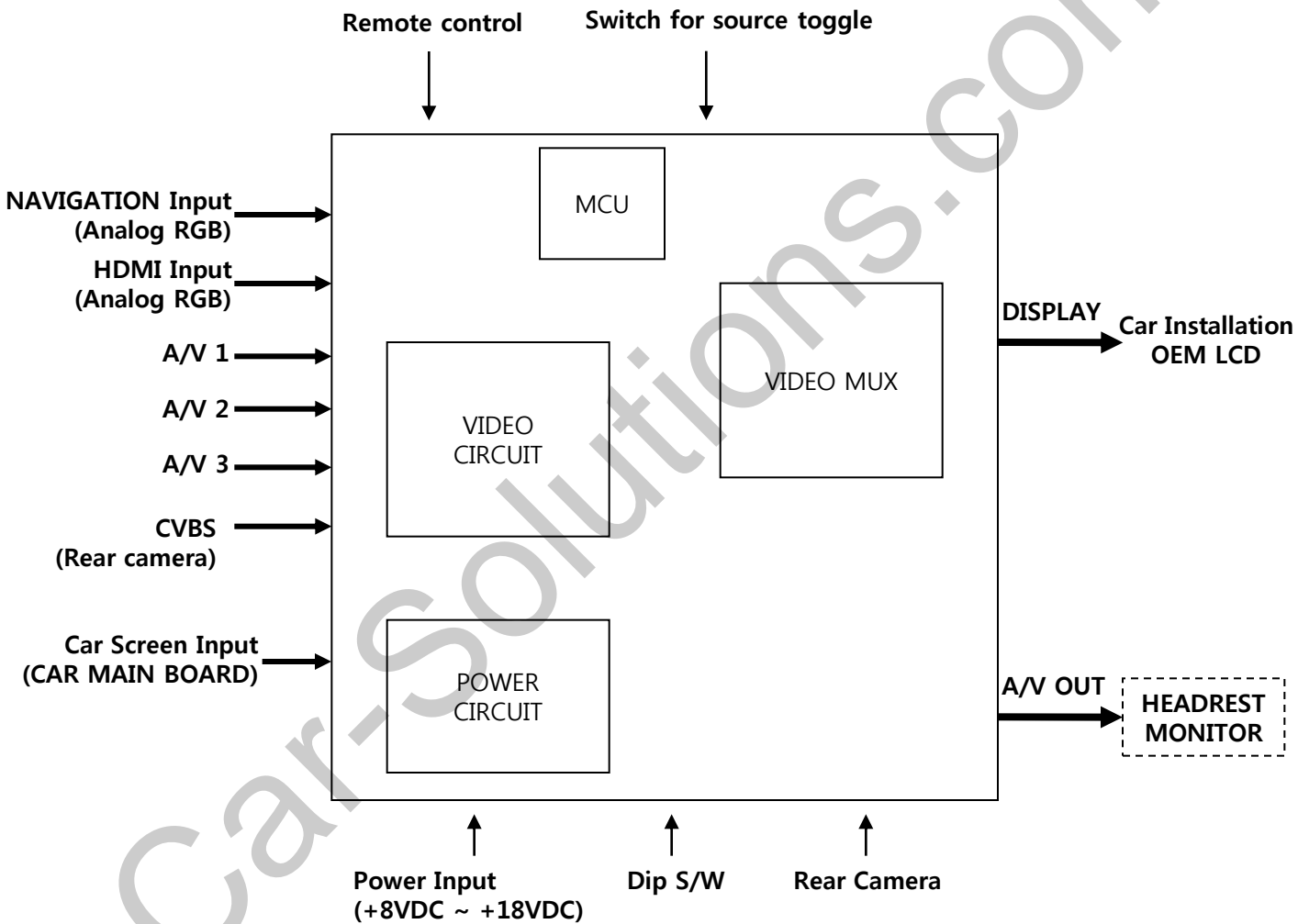
---

## 1.2 Features

- Able to adjust DVD, NAVI display on screen
- Provide power cable to connect with rear camera
- Dynamic PAS(Parking assistance system), moving parking line according movement of steering wheel
- Able to display PDC on the screen(Parking Distance Control)

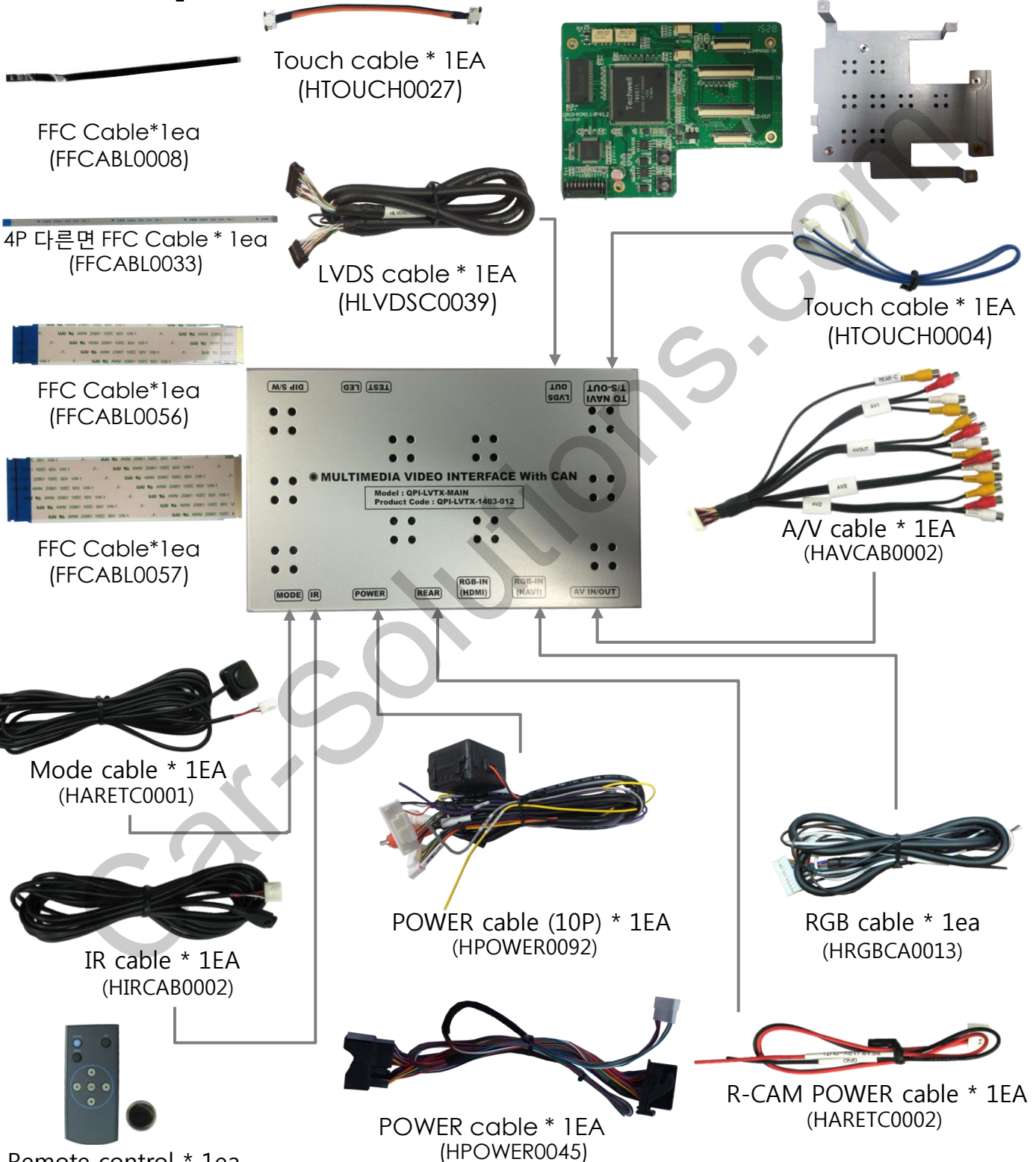
# 1. Specifications

## 1.3 System Diagram



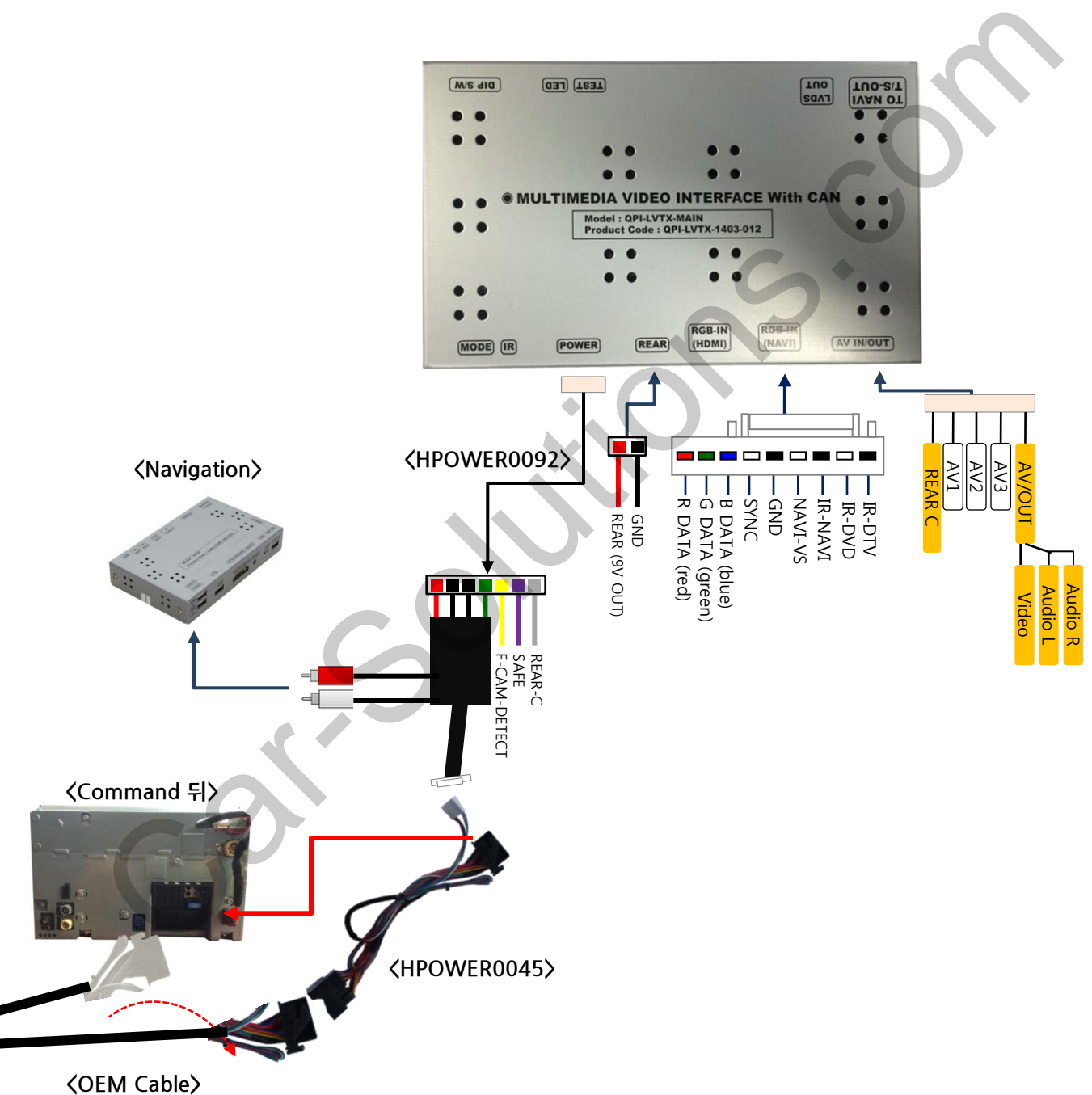
# 1. Specifications

## 1.4 Components



# 2. Installation

## 2.1 Installation Diagram





# 2. Installation

## 2.2 Installation

### ※ Sub-board connection



① Disassemble the monitor and connect the touch cable from the back of LCD as shown on the left

- OEM Gold touch cable → Supplied touch cable (HTOUCH0027)

- Supplied FFC cable → Supplied touch cable (FFCABL0033) (HTOUCH0027)

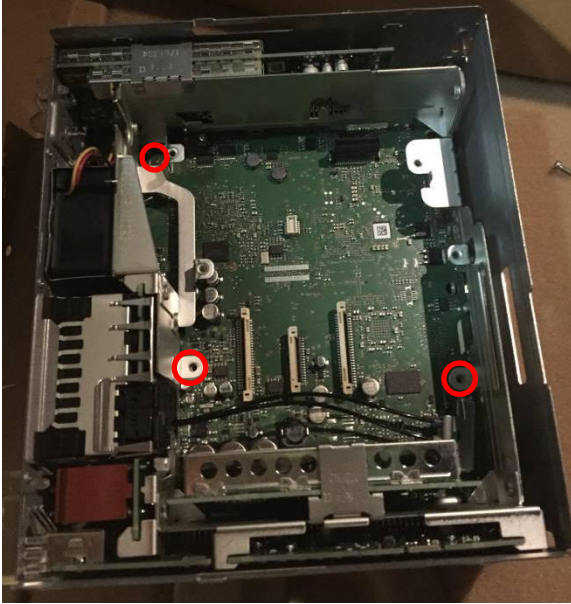
- Supplied black FFC cable → Where OEM touch cable is connected (FFCABL0008)



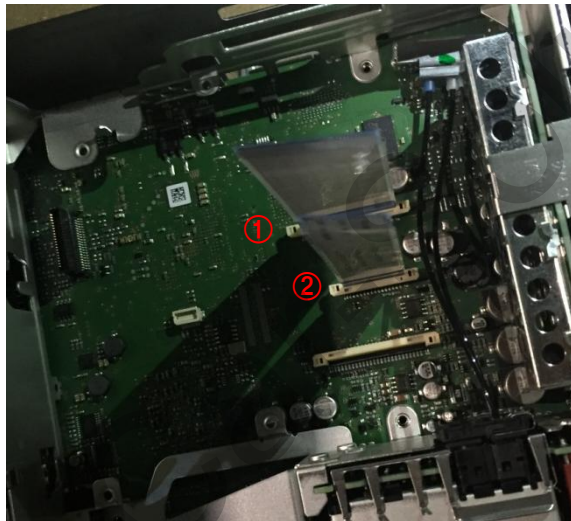
② Take out cables through the marked place and assemble the plate.

# 2. Installation

## 2.2 Installation



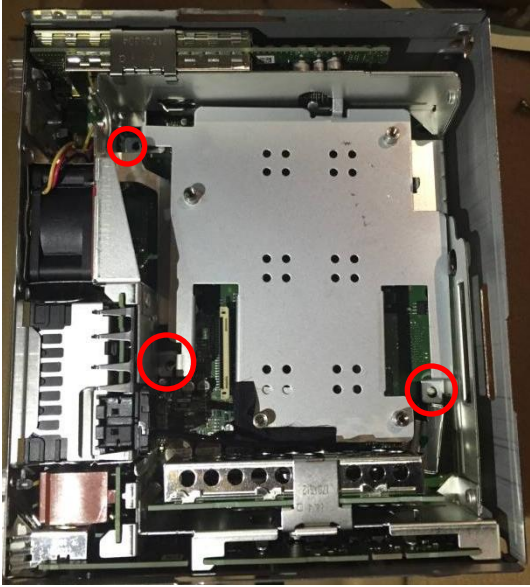
- ③ This picture is another side of LCD  
Loosen 3 bolts which are marked on the left.



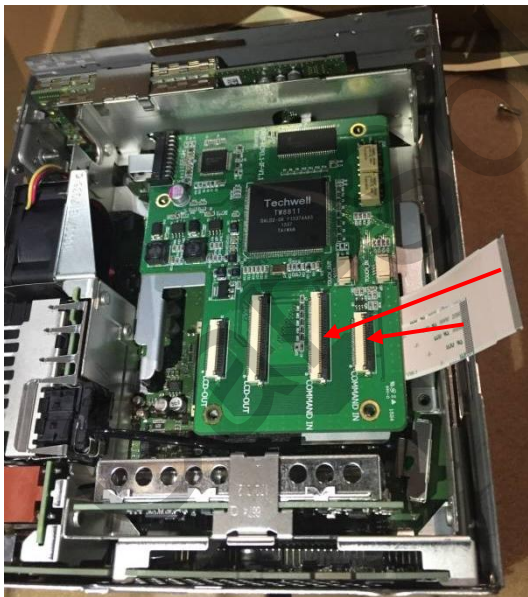
- ④ Connect supplied FFC cable to marked place
- Supplied 50P FFC cable → ①  
(FFCABL0057)
  - Supplied 30P FFC cable → ②  
(FFCABL0056)

# 2. Installation

## 2.2 Installation



⑤ place the bracket where bolts were loosened and tighten bolts again



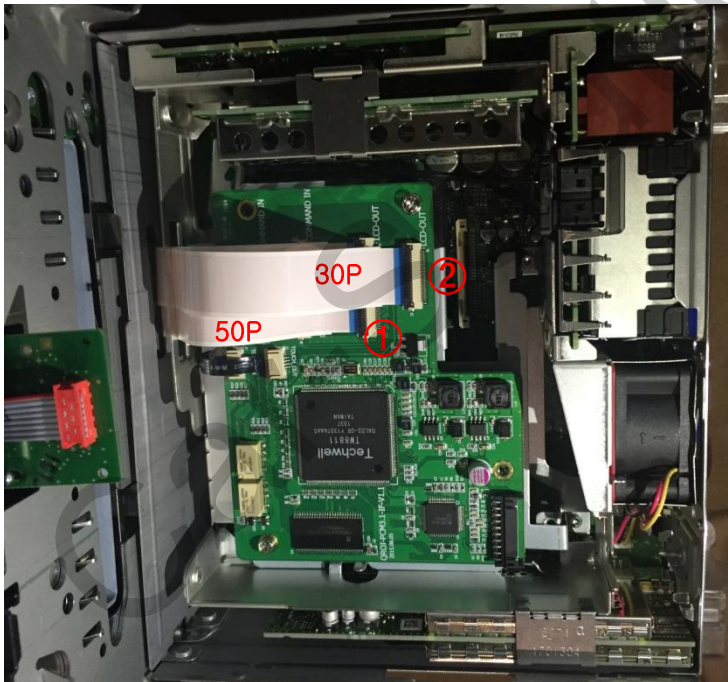
⑥ On the top of bracket, place the subboard and connect the supplied FFC cables as shown on the left

# 2. Installation

## 2.2 Installation



- ⑦ Pull the cables on the backside of LCD through the marked place.



- ⑧ Connect cables as shown on the left

- Black FFC cable → LCD OUT
- FFC cable → LCD IN
- Original 50P FFC cable → ①
- Original 30P FFC cable → ②

※ Do not damage or cut any parts of original FFC cable when connecting to the sub-board.

# 3. Settings

## 3.1 DIP switch



※ ON : DOWN / OFF : UP  
 Default : Dip S/W 8 OFF

- ※ For example: Use of DIP S/W
- Use input mode : A/V2, A/V3
- Use original navigation
- External rear camera

▷ DIP S/W : 1,2 → ON

(INPUT MODE Display X)

▷ DIP S/W : 3 → OFF (A/V2 Display)

▷ DIP S/W : 4 → OFF (A/V3 Display)

▷ DIP S/W : 5.6 → OFF

▷ DIP S/W : 7 → ON (Display external rear camera)

▷ DIP S/W : 8 → OFF (Default)

PIN	Function	Dip S/W Selection
1	Displaying RGB input	ON : RGB mode skip OFF : RGB mode display
2	Displaying A/V 1	ON : A/V 1 mode skip OFF : A/V1 mode display
3	Displaying A/V 2	ON : A/V 2 mode skip OFF : A/V2 mode display
4	Displaying A/V 3	ON : A/V 3 mode skip OFF : A/V3 mode display
5		N.C
6	Displaying OEM NAVI	ON : Equipped with OEM NAVI OFF : Doesn't equipped with OEMNAVI
7	Setup of rear camera use	ON : CVBS4 OFF : MAIN
8		N.C

※ Please make sure to disconnect the power cable of the interface and reconnect the power cable again to apply the dip switch setting whenever changing DIP switch.

support@car-solutions.com  
 Otherwise, DIP switch setting will not be applied.

# 3. Settings

## 3.2 Remote Control



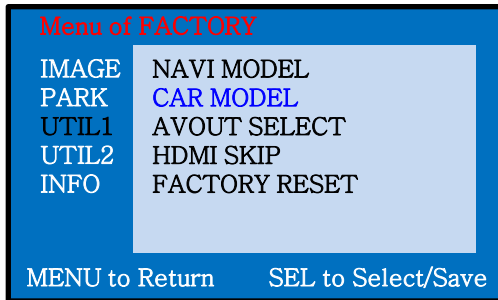
<i>Key</i>	<i>Function</i>
POWER	Unavailable
PIP	A/V 1~2 Mode : Display remote control UI on the screen A/V 3 Mode : Able to switch mode by using UI on the screen
MENU	Activate OSD Menu
OK	Making a selection, changing image display
▲	Moving upward
▼	Moving downward
◀	Moving leftward (If you press this button 2 seconds long, you can access the factory mode.)
▶	Moving rightward (If you press this button 2 seconds long, you can reset all the data about user environment.)

# 3. Settings

## 3.3 Car Model and Navi Mode

**FACTORY mode** – Press ◀ button 2 seconds long on the remote control.

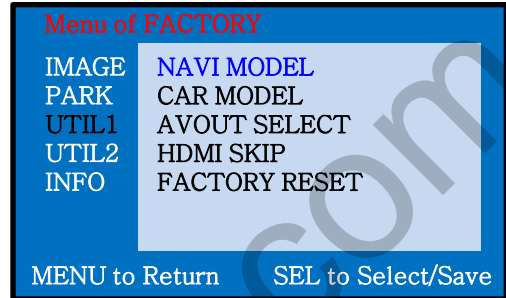
### ▪ Setup for car model



#### **UTIL1 - CAR MODEL**

Select car model  
PCM3.1

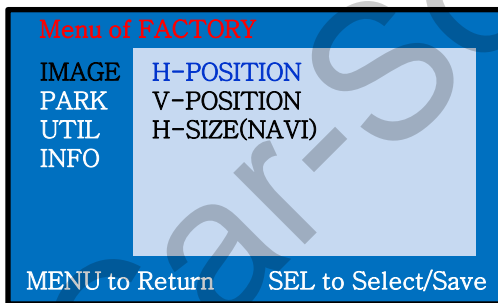
### ▪ Setup for navigation



#### **UTIL1 – NAVI MODEL**

Select Navigation model

DEFAULT  
DEFAULT  
LS901  
PAPAGO  
QROI  
KD900  
ACCLASS  
GI5000A  
GI8000N  
HDMI  
WP9200  
MYVI  
NAV\_506TP  
ICUBE  
GN\_3000  
NAVIST  
PAPAGO  
SMITH\_PAD  
Q-ROI



#### **IMAGE**

Adjust navigation position and size

H-POSITION : Move display horizontally

V-POSITION : Move display vertically

H-SIZE : Adjust navi size horizontally

[support@car-solutions.com](mailto:support@car-solutions.com)

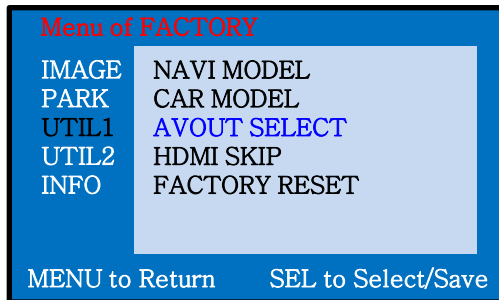
**\* Go into FACTORY/ IMAGE (as shown right) and adjust the position and the size of the navigation after setting the definition of the navigation**

[www.car-solutions.com](http://www.car-solutions.com)

# 3. Settings

## 3.4 FACTORY Mode

**FACTORY mode** – Press ◀ button 2 seconds long on the remote control.



### UTIL1 – AVOUT SELECT

Selecting background sound  
After  
returning navigation or original  
mode

DEFAULT : Selecting AV sound  
just before changing  
navigation or original mode  
from the AV mode

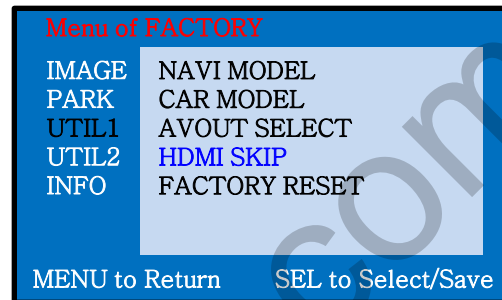
AV 1~3 : Sound of the selected  
AV source 1~3



### UTIL1 - FACTORY RESET

FACTORY MODE RESET

※ This function also can be activated  
by pressing ▶ button long on the  
remote [support@car-solutions.com](mailto:support@car-solutions.com)



### UTIL1 – HDMI SKIP

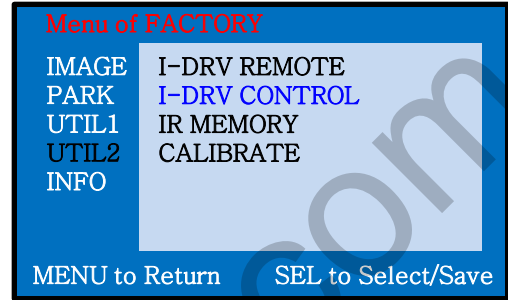
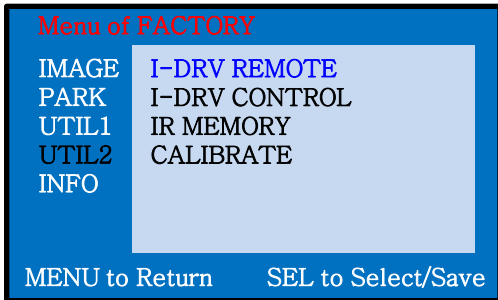
Selection of HDMI mode  
  
ON(No use) / OFF(Use)



# 3. Settings

## 3.4 FACTORY Mode

FACTORY mode – Press ◀ button 2 seconds long on the remote control.



### UTIL2 - I\_DRV REMOTE

Choose DTV and DVD model to be control I\_DRV function

USER(IR MEMORY input)

※ If the mode is AV1~AV3, the image of remote appears on the screen after tapping the screen.

### UTIL2 - I\_DRV CONTROL

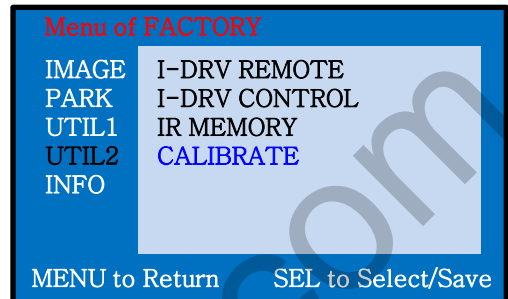
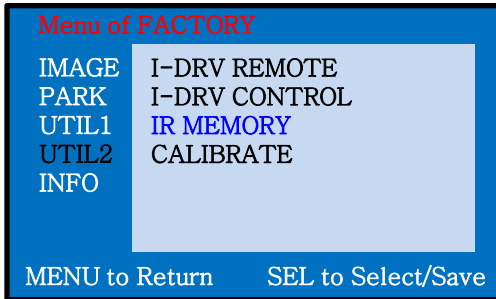
Whether to use IR REMOTE

ON / OFF

# 3. Settings

## 3.4 FACTORY Mode

FACTORY mode – Press ◀ button 2 seconds long on the remote control.



### UTIL2 – IR MEMORY

To register DVD, DTV remote control, the remote control value must be registered and can be controlled

※ Please select user mode on IR REMOTE in order to use this function

DVD / DTV

(DVD, DTV Please connect IR cable to the remote signal)

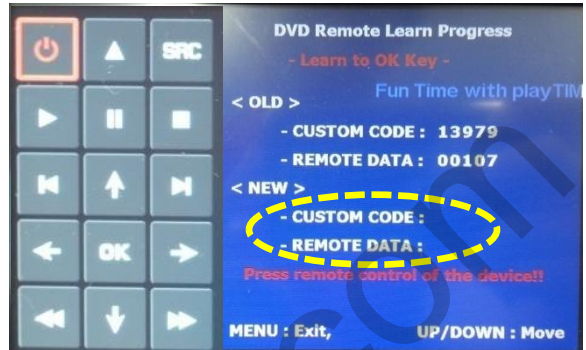
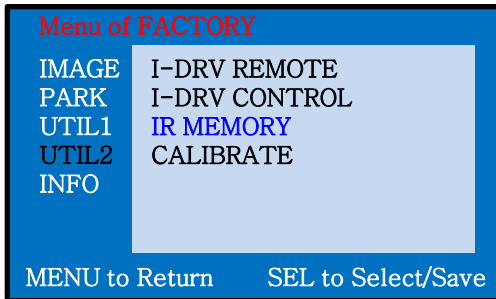
### UTIL2 – CALIBRATE

Touch Calibration

YES / NO

# 3. Settings

## 3.5 DVD, DTV IR-MEMORY Input



- ① First of all, press ◀ button on remote controller 2 seconds long or press UP→DOWN→UP→MENU button in order to access Factory mode. Choose IR MEMORY on UTIL2.

In IR MEMORY, you can choose AV source of DTV and DVD you want to use.

- ② Picture above shows DVD remote control button value input, select menu you want to save. (To register DTV remote control button value, select IR MEMORY – DTV and follow below instructions.

For example)

- a. After select OK button on OSD menu, press intended I-Drive button
- b. Indicated part above will flicker, and press POWER on DVD remote control. (continue to next page)

### IR-MEMORY mode?

When you want to control DVD and DTV via touch screen (using OSD menu) with other models besides already registered option-SANYO and NECVOX, you can register value of DVD and DTV' s remote control which you have.

Then you can control DVD and DTV via touch screen.

# 3. Settings

## 3.5 DVD, DTV IR-MEMORY input



Instruction> continued...

c. The values that you registered will appear as green text in the marked area on pressing the button. And the values will be saved automatically.

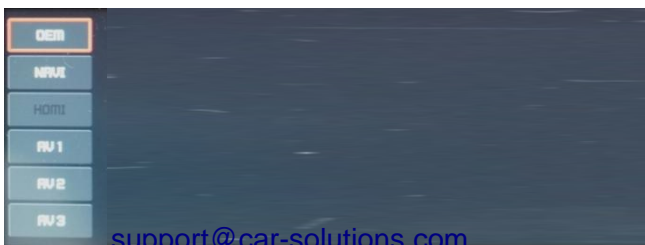
d. Register remain buttons' value in OSD menu like the above-mentioned.

- ③ After register, select "SRC" button in OSD menu. Then you can see confirmation window as shown above. At the moment, (If data is saved, DVD TYPE and DTV TYPE will be changed to "USER" automatically.)

If you see "SUCCESS" on screen, the data is saved clearly and you can control DVD via touch screen. BUT, you MUST change the option in FACTORY-UTIL2-\_DRV REMOTE to "USER".

※ When you touch the screen, you can control DVD, DTV using remote control UI via touch screen

※ If touch the screen in DVD(A/V1), DTV(A/V2) mode, Can see remote control UI  
If touch the screen in RGB(HDMI), A/V3 mode, Can see mode switching UI  
- If you want to see mode switching UI in DVD, DTV mode, Select "SRC" button



# 3. Settings

## 3.6 Use of OEM button

### Monitor



- ※ NAVI button
- Dip6 OFF : Press short - mode switch
- Dip6 ON : Press long- mode switch
- Press short- return to OEM mode



- ※ Press "OPTION" button for 5 seconds - Reset

### Steering Wheel



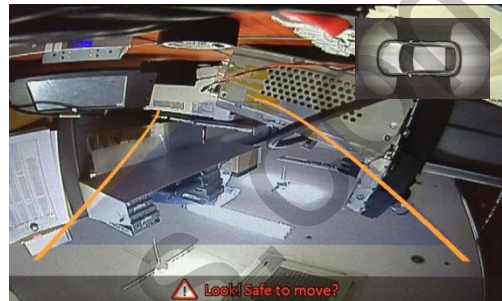
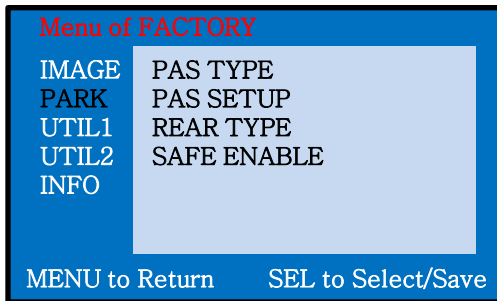
- ※ Press "BACK" button for 5 seconds - mode switch

# 3. Settings

## 3.7 Rear Camera

FACTORY mode – Press ◀ button 2 seconds long on the remote control

※In case of installing the rear camera, remember to put Dip S/W 7 down(On)-Refer to page 9



### □ PARK

PAS TYPE : Selecting Type of parking guide line

- NOT USED : Not use Parking guide line
- PAS ON : Selecting Dynamic Parking guide line
- PAS OFF : Selecting fixed Parking guide line

PAS SETUP : Adjusting the position of the parking guide line (available in PARK SETUP-> V-POSITION, H-POSITION)

REAR TYPE : Choose rear camera recognition

- \* LAMP - Detecting the rear view camera via rear lamp (Installer must connect "Rear-C" cable of the power cable to the rear lamp of the car.)
- \*CAN - Detecting the rear view camera by CAN signal (Installer must connect "CAN" cable of the power cable to the "CAN" cable of the car.)

SAFE ENABLE : If your car is connected with CAN cable and it is in "ON" state, you can NOT watch DVD or A/V except original image or navigation (HDMI) while driving. At that time the screen use only main and navigation(default : OFF)

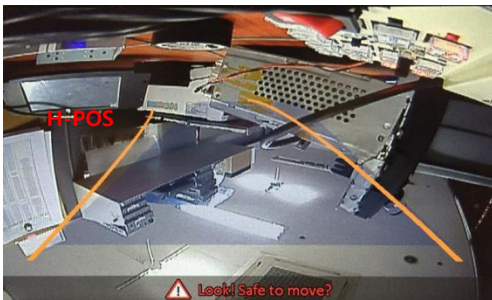
- If you want to get to the FACTORY mode, set the gear as rear state and press "LEFT" button 2 seconds long on the remote control or the keypad.

# 3. Settings

## 3.8 Rear Parking Guidelines

Go to Factory Menu, choose PAS SETUP, by using OK button change H-POS → V-POS

### □ H-POS



In H-POSITION, use ◀, ▶ on remote control, to adjust parking guideline left and right.

### □ V-POS



In V-POSITION use ▲, ▼ on remote control, to adjust parking guideline up and down.

# 3. Settings

## 3.9 OSD (On Screen Display) / Analog RGB Mode



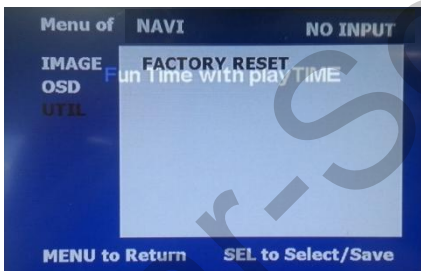
### □ IMAGE

- \* BRIGHTNESS
- \* CONTRAST
- \* SHARPNESS



### □ OSD

- \* LANGUAGE : Set OSD language (only support English and Chinese)
- \* TRANS : Adjust OSD transparency
- \* H-POSITION : Move OSD horizontally
- \* V-POSITION : Move OSD vertically



### □ UTIL

- \* FACTORY RESET  
: Factory reset only for OSD function (unable to reset video position)



# 3. Settings

## 3.9 OSD (On Screen Display) / Video Mode

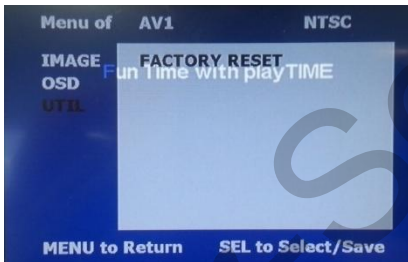


### □ IMAGE

- \* BRIGHTNESS
- \* CONTRAST
- \* SATURATION
- \* HUE
- \* SHARPNESS

### □ OSD

- \* LANGUAGE : Set OSD language (only support English and Chinese)
- \* TRANS : Adjust OSD transparency
- \* H\_POSITION : Move OSD horizontally
- \* V\_POSITION : Move OSD vertically



### □ UTIL

- \* FACTORY RESET  
: Factory reset only for OSD function (unable to reset video position)

# 4. Trouble Shooting

---

**Q. Unable to switch the mode**

- A. Check connection of Ground cable and IR Cable.  
Check LED lamp is on, if not check connection of POWER cable.

**Q. All I got on the screen is black.**

- A. Check second LED lamp of the interface is on, if not, check A/V sources connected are working well.  
(Second lamp indicates AV sources connected works well.) Check interface connection has been done well.

**Q. Displayed image color is not proper (too dark or unsuitable color)**

- A. Press ► button for 2 seconds on the remote to check the status. , if it does not work, inform to manufacturer.

**Q. I cannot watch the rear camera on the screen**

- A. Set the DIP switch #7 as state "ON".

**Q. When the mode is not skipped**

- A. Check DIP Switch.

**Q. OEM image is not displayed.**

- A. Check interface's LCD In/Out cable connection. If the status keeps on, inform to manufacturer.

**Q. Screen displays only white color.**

- A. Check LCD out cable is connected well, if this status keeps, inform to manufacturer.

**Q. Show PIP function via handle button, and original screen appear half only.**

- A. This is not because of faulty interface, please check original monitor split function settings.

**Q. After connect CAN cable, set gear "P", video doesn't appear.**

- A. Go to "FACTORY MODE" and check "UTIL-Rear Select". Change "LAMP" settings to "CAN" with remote control.

※ LAMP : In case of connecting "Rear-C" wire of Power Cable to Rear Lamp in vehicle.

It may not work on a camera with 12V

# • Revision History

Date	History	Page
2016.03.29	- Dip S/W (#8 Factory reset function deleted)	13page
2016.07.04	- FFC cable	12page